

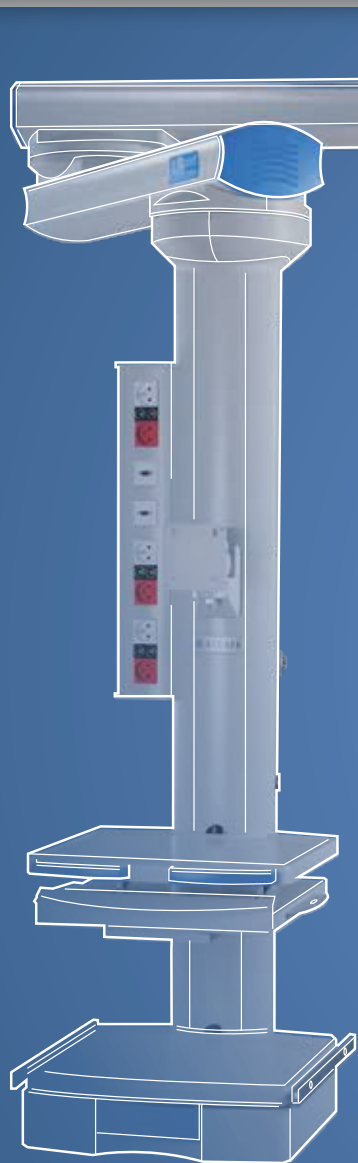


# AIRport

Equipment Management System

**MAKING SPACE**  
WORK FOR YOU





## STERIS PRESENTS THE AIRPORT EQUIPMENT MANAGEMENT SYSTEM

### A NEW SOLUTION FOR ARRANGING THE LAYOUT OF YOUR WORK STATION

Keep the right tool in the right place, while freeing up work space to its maximum. As medical procedures become more complex, this imperative turns out to be essential in the hospital environment.

With its historical involvement in operating suites, STERIS is taking a fresh look at ceiling supply units.

The result? The AIRport Equipment Management System, a different design, which allows you to create your own service system, perfectly suited to your needs, and which can be adapted over time.



Wide inner cable-run diameter:  
120mm



## A UNIQUE MODULAR DESIGN

### FOR EVERY PROBLEM, A SOLUTION

Because your needs differ depending on the application, our product line is extensive. The structural elements come in different sizes and have different lifting capacities. Choose from our types of arm and set up your installation according to your needs.

The arms are complemented by a generous range of accessories, which transform the ceiling supply unit into a specialist assistant: surgery, anaesthesia, intensive care, minimally invasive surgery, etc. Shelves and drawers, monitor mountings and keyboard stands, lights, infusion holder, rails, handles: this wide selection allows you to create the ideal, economically appropriate configuration for each situation.

When it comes to the distribution of fluids, safety is crucial. To provide you with every guarantee, we have selected the best suppliers on your behalf.

### DESIGN AND QUALITY: FINISHES THAT BEAR THE STERIS SIGNATURE

Elegant and discrete, the AIRport Equipment Management System range's design integrates perfectly into the medical environment. Its soft, neutral colours naturally blend into the hospital environment, and the quality of its finishes (completely encased shapes, with no visible screws, round, smooth surfaces and integration of cables, etc) facilitates cleaning and decontamination procedures.

Special attention has been paid to the details, with aesthetic gas and electrical outlets, retractable handles, rounded drawers, etc. It is a design that perfectly matches the demands of the surgical environment.

### A FUTURE-READY SYSTEM

The structural components in the AIRport Equipment Management System range are particularly adaptable. Whatever your initial configuration, you will always be able to change it. Add or remove distribution modules, connectors, shelves, computer mountings, etc. Anything is possible thanks to its particularly clever design:

- The wide inner cable-run diameter (120mm) means you have space left for running through extra cables and conduits later on: your installation is future-ready!
- Outlets can be mounted directly onto the column. For the simplest needs, it is a perfectly effective solution... and particularly economical! To increase outlet capacity on distribution columns, on distribution columns, it is possible to add additional side modules in the future.

This means you can make any subsequent modifications without altering the basic installation. If, for example, you want to add a cable, it is pointless to re-wire the existing inner cable-run. This work has therefore been drastically simplified. Finally, the integrated rails on either side of the distribution column mean you can add or reposition your accessories at leisure. Add, remove, change... with the AIRport Equipment Management System, you are never hampered by your existing installation. It is you who decides, not the system!

### ERGONOMICS: WHERE TECHNOLOGY KNOWS HOW TO BLEND IN

Ever pragmatic, our engineers designed the AIRport Equipment Management System paying particular care to its ergonomics. Comfort is not an option! This is why all our arms are fitted with a mechanical friction brake, which can be adjusted to your requirements, as standard. This means that the equipment loaded does not drift away. The fixed or retractable handles offer a safe and comfortable grip, and with the optional electro-pneumatic locking pin, you can operate even the heaviest equipment with ease and precision. Lastly, the AIRport Equipment Management System's modular design means that the outlets for each piece of equipment can be positioned as closely as possible and with the best orientation (side or front).



THE AIRPORT EQUIPMENT MANAGEMENT SYSTEM RANGE PHILOSOPHY IS: MORE SERVICES, FEWER RESTRICTIONS.





## STANDARD CONFIGURATIONS

### FINDING THE IDEAL SOLUTION

Needs differ considerably, depending on the application: anaesthesia, surgery, minimally invasive surgery, intensive care, etc.

The AIRport Equipment Management System offers solutions for every scenario with its standard configurations.

Designed to be modular and adaptable, the AIRport Equipment Management System helps you as you expand your activities: adding and removing components is always very easy, limiting work to an absolute minimum. Whatever the situation, you have all the necessary functionalities, within a minimum of space...

# ANAESTHESIA

The distribution arm is the anaesthetist's preferred solution. Its generous inner cable-run diameter (120mm) means any anaesthesia respirator can be connected: gas hoses, electric cables, etc.

With its wide reach (1200 to 2400mm depending on the version), it is easy to use in both small rooms and large.

It is operated precisely and effortlessly, thanks to its gas spring, which offers vertical travel of 550mm. With its elegant tones, fitted with immaculately aesthetic outlets, standing discreetly in the raised position, the distribution arm blends perfectly into the operating theatre.



## DISTRIBUTION ARM:

- Maximum reach: 2400mm
- Inner cable-run diameter: 120mm

## ANAESTHESIA RESPIRATOR CONNECTION:



Gas hose connection



Electric cable connection



## MOTORISED COLUMN:

The ideal support solution for anaesthesia equipment that frees up floor space. Movement of the arm and anaesthesia equipment is effortless and straightforward. The equipment height adjustment is accurate thanks to the remotely controlled motorisation.





# SURGERIES

## SURGERY

With a maximum load of 520kg, the carrier arm has been designed to comfortably accommodate all the functionalities required for surgery. Its reach extends up to 2400mm, which means the equipment can be positioned ideally in relation to the surgical field.

It is easily operated by means of the ergonomic handles. A specific stand is set aside for electro-surgical units.

It comprises a support shelf for the electro-surgical unit and a drawer unit for storing accessories (pedals, electro-surgical unit holder, etc).

The computer interfaces find their own places thanks to the monitor mountings and keyboard stand, fitted with a clever, reversible right-handed/left-handed mouse platform.

Lastly, side rails accommodate all the additional accessories: suction bottles, vacuum regulator, etc.

### MEDIUM CARRIER ARM

- Maximum load: 520kg
- Maximum reach: 2400mm
- Inner cable-run diameter: 120mm

### ELECTROSURGICAL UNIT STORAGE:



Electrosurgical unit shelf



Drawer unit for storing electro-surgical unit accessories (pedals, electro-surgical unit holder, etc)

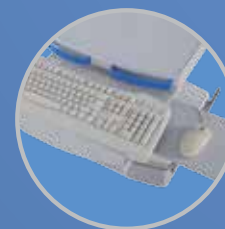
### COMPUTER STANDS:



Monitor mountings



Keyboard stand



Mouse platform

### DEDICATED RAILS FOR ADDITIONAL ACCESSORIES:



- Suction bottles
- Vacuum regulator...

### HANDLES FOR OPERATING THE ARM:





## MOTORISED ARM:

Perfectly polyvalent, the AIRport Equipment Management System motorised arm knows how to be essential in the operating room. With its long reach it adapts as easily to traditional surgery as it does to minimally invasive surgery. The remotely controlled motorisation adjusts the height of your equipment accurately and allows the surgeon to have a workstation adapted to his/her stature.



## MINIMALLY INVASIVE SURGERY

The AIRport Equipment Management System provides an effective and compact solution for the specific needs of minimally invasive surgery. The endoscopy equipments (monitor, light source, camera, printer, etc) are easily managed by the carrier arm.

Low voltage outlets, for the endoscopy signals, are attached together with the electrical outlets in the distribution module.



By combining the AIRport Equipment Management System with XLED™ surgical lights ambient lighting, STERIS offers you an ergonomic workstation.

## ENDOSCOPY EQUIPMENT SUPPORTS:



Monitor



Printer



Light source and camera



Dedicated low-voltage outlets for endoscopy signals





## INTENSIVE CARE

The ideal configuration for intensive care units comprises two arms. The first is a carrier arm designated for infusions.

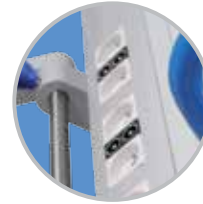
The second is a medium carrier arm designated for ventilation and the work station. A wide shelf fitted with an examination lamp accommodates the resuscitation ventilator while providing a work space for the nursing staff.

A support dedicated to the patient data monitor is suitable for all major brands (Philips, GE, etc). Additional accessories, such as suction bottles or catheter stands, are easily placed on a multi-purpose circular rail.

### MEDIUM CARRIER ARM:

- Maximum load: 520kg
- Maximum reach: 2400mm
- Inner cable-run diameter: 120mm

### INFUSION EQUIPMENT:



Syringe pump electrical connection



Syringe pump holder



Infusion bag holder

### HANDLE FOR OPERATING THE ARM:







**PATIENT DATA SUPPORTS:**



Monitor mountings



Resuscitation ventilator

**WORK STATION SUPPORTS:**



Examination lamp



Work surface

**DEDICATED RAILS FOR ADDITIONAL ACCESSORIES:**



- Catheter stands
- Suction bottles
- Vacuum regulator
- Bin

**MONITOR MOUNTING FOR PHILIPS MONITOR:**



**MEDIUM CARRIER ARM**

- Maximum load: 522kg
- Maximum reach: 2400mm
- Inner cable-run diameter: 120mm



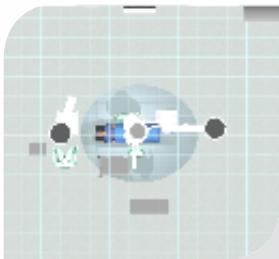
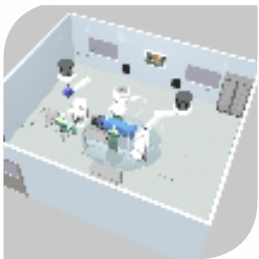
# THE AIRPORT EQUIPMENT MANAGEMENT SYSTEM: A SOLUTION TO EVERY REQUIREMENT

## CHANGES:

Have your needs changed? With the AIRport Equipment Management System, making changes is never a problem. The system has been designed so that you can add or remove most of the options without changing the structure.

## PROJECT MANAGEMENT: YOUR PROJECT IN 3 STAGES

STERIS accompanies you throughout your project, from the definition of requirements right through to the training of your teams. From the simple positioning of equipment up to the creation of a full operating facility, consulting STERIS makes all the difference. Good collaboration begins right at the start of the project: accurate definition and management ensures the expected results, cost control and deadlines are achieved.



### 1 • PROJECT MANAGEMENT

Our teams will carry out a feasibility study of your site free of charge. STERIS has developed its own software solution to configure your products and show you how they will be implemented into your OR. From your CAD file, we can represent your future Operating Room with all equipments inside or reproduce the complete technical plateau with patient flow. Then, a short video can be easily created and shared with you.

### 2 • PRODUCTION

We are manufacturing all our pendants based on your inputs. From the size of the arms to the length of the column, we build together the product to fit inside your space. The utilities and accessories are also selected and placed where you need them. The component parts of your configuration are pre-assembled on our production site. 90% of parts are made close to the STERIS plant to offer better reactivity and to limit the carbon impact for the planet. All products are tested and validated before their shipment, to ensure best quality.

### 3 • INSTALLATION

On-site installation is simplified, so the rooms are made available to their users as quickly as possible. Once the arms and columns have been installed, our teams perform the final adjustments on the accessories, thanks to our accessories attachment system (which offers flexibility for positioning). Then, our team presents the installation to its future users.





**A** | Choose the length of the arm and column

**B** | Choose electrical and gaz outlets, ORI connections, etc

**C** | Add shelves, monitor holders, infusion racks, etc

**D** | Optimise your space within the operating room

**AIRPORT EQUIPMENT MANAGEMENT SYSTEM TAILOR-MADE SOLUTIONS:  
CREATE YOUR OWN OPERATING ROOM ACCORDING TO YOUR NEEDS**

## STERIS, a major player in the healthcare sector

With more than 12,000 employees worldwide, STERIS is a major player in the healthcare sector. Partnering with more than 25,000 Customers in over 90 countries, STERIS offers an all-in approach for the entire surgical suite with ORigami™: from surgical tables, operating lights, integration systems, and distribution arms, to partition walls, doors, sinks, laminar flows and much more. Everything is focused, coordinated and optimised to offer a remarkable quality of service every single day. STERIS also offers infection prevention technologies through STERIS IPT (Infection Prevention Technology: washers, disinfectors, sterilisers and consumables.



### STERIS SAS

116 Avenue Magudas  
33185 Le Haillan (Bordeaux) - France  
Tel: + 33 (0)5 56 93 94 94  
Fax: + 33 (0)5 56 93 94 95  
Email: [contact\\_hc@steris.com](mailto:contact_hc@steris.com)  
[www.steris-healthcare.com](http://www.steris-healthcare.com)  
[www.steris-accessories.com](http://www.steris-accessories.com)

### STERIS Corporation

5960 Heisley Road - Mentor,  
OH 44060-1834 - USA  
Tel: + 1 440-354-2600  
Fax: + 1 440-639-4457  
[www.steris.com](http://www.steris.com)

### ASIAN Headquarters

STERIS SINGAPORE PTE LTD  
3 International Business Park  
#01-20 Nordic European Center  
Singapore 609927  
Tel: + 65 6841 7677  
Email: [APCS@steris.com](mailto:APCS@steris.com)

### STERIS OFFICES WORLDWIDE

Belgium + 32 3 304 95 44  
Canada + 905 677 0863  
China + 86 21 6137 1166  
France + 33 5 56 93 94 94  
Germany + 49 221 4661 20 30  
India + 91 22 4322 1616  
Italy + 39 02 213 034 1  
Japan + 81 3 5210 1521  
Latin America + 55 11 3372 9499  
Malaysia + 60 3 7954 9822  
Russia + 7 495 225 85 63  
Spain + 34 91 658 5920  
Switzerland + 41 (0) 32 376 02 00  
UK + 44 116 274 0600

## European made AIRport Equipment Management System

The AIRport Equipment Management System is distributed throughout the world, and manufactured in Europe, on a site producing a wide range of surgical equipments. This choice enables us to offer products of maximum quality, both in industrial and environmental terms:

- Proximity and integration of the specific needs of French and European users
- Full control of industrial processes
- Integration of the best European suppliers giving preference to local suppliers

