

Your solutions partner for **30 YEARS**

BROWNE STF LOADCHECK

Instructions for use



Product description

The Browne STF Load Check Indicator has been carefully designed to perform in an equivalent manner to 'test soils' by providing a realistic multiple challenge for the washer disinfector machine.

Containing two sources of protein, lipids and polysaccharides the Browne STF Load Check Indicator mimics the cleaning efficacy soil tests for surgical instruments described in ISO/TS 15883-5, but without the mess and without the inconvenience. The Browne STF Load Check contains no blood products.

Pack size

Description	Size
Browne STF Loadcheck	100/Per Box

Indications for use

The Browne STF Load Check is designed for use in every wash cycle. Just put an indicator in the holder, load it in a basket with the instruments, run a normal cycle, then visually inspect the indicator afterwards, no mess, no fuss.

Safe Storage

Recommended Storage 0 - 30 C 30 – 60 % RH

Please note that the product is sensitive to temperature variations and it is recommended that it is stored in the lower range of the recommended temperature range of 0 – 30 degrees, preferably refrigerated under 10 degrees.

Disposal

Dispose of used/expired indicators using normal waste disposal.

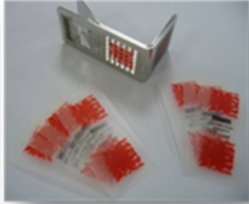
Shelf Life

12 months from date of manufacture

Direction for use

Step 1:

Place Indicator in holder

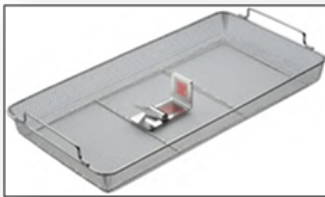


Step 2:

Place the loaded STF holder into a tray of soiled instruments in the washer disinfectant

Step 3:

Make sure the STF is lying flat on its back.



Step 4:

Wash the load. If the load check is clean (no red residue) at the end of the wash cycle, the test has passed.

Step 5:

Document / record the result

Step 6:

Perform this test with every load or at least once a day