



ATHMEDICAL
TRACEABILITY OF SURGICAL DEVICES

AnciTrak² Surgical Tray Management System

www.athmedical.com

ATH MEDICAL IS A MEMBER OF STERIMED GROUP



SafMed

Your total solutions partner for more than 30 YEARS

SafMed

Your solutions partner for more than **30 YEARS**

We specialise in providing solutions and products that improve the productivity and effectiveness in the CSSD, Operating Theatre & Endoscopy Unit. From expert advice on new theatre or CSSD designs to providing the latest digital operating theatre and instrument tracking technology, we have the products and experience to offer meaningful value to our customers.



Process Improvement



Track, Trace & Asset
Management



Digital Theatre
Systems



CSSD & Operating
Theatre Design Advice



Online & Classroom
Based Education



Sterility Assurance



Decontamination



Customized Service
Programs

**Gauteng, Mpumalanga,
Limpopo & North West**
Tel: 011 201 4300

Kwa-Zulu Natal
Tel: 082 464 3832

Western & Eastern Cape
Tel: 021 763 3280

Free State & Northern Cape
Tel: 082 686 8075

E-mail: info@safmed.co.za
Website: www.safmed.co.za
www.facebook.com/Safmed.SA/
Twitter: [@SafMedSA](https://twitter.com/SafMedSA)

AnciTrak²: DESIGN AND ATTRIBUTES



**THREE CAMERAS 4K
WITH LED LIGHTING, ALLOWING
3D TREATMENT**

**HIGH LEVEL MOTHERBOARD
I5 CPU, DDR 4 RAM, 8GO, FOR A FASTER
TREATMENT OF DATA**

**PRECISION WEIGHT SENSOR
FROM 0,5g TO 15kgs, WITH A 0,5g
PRECISION**

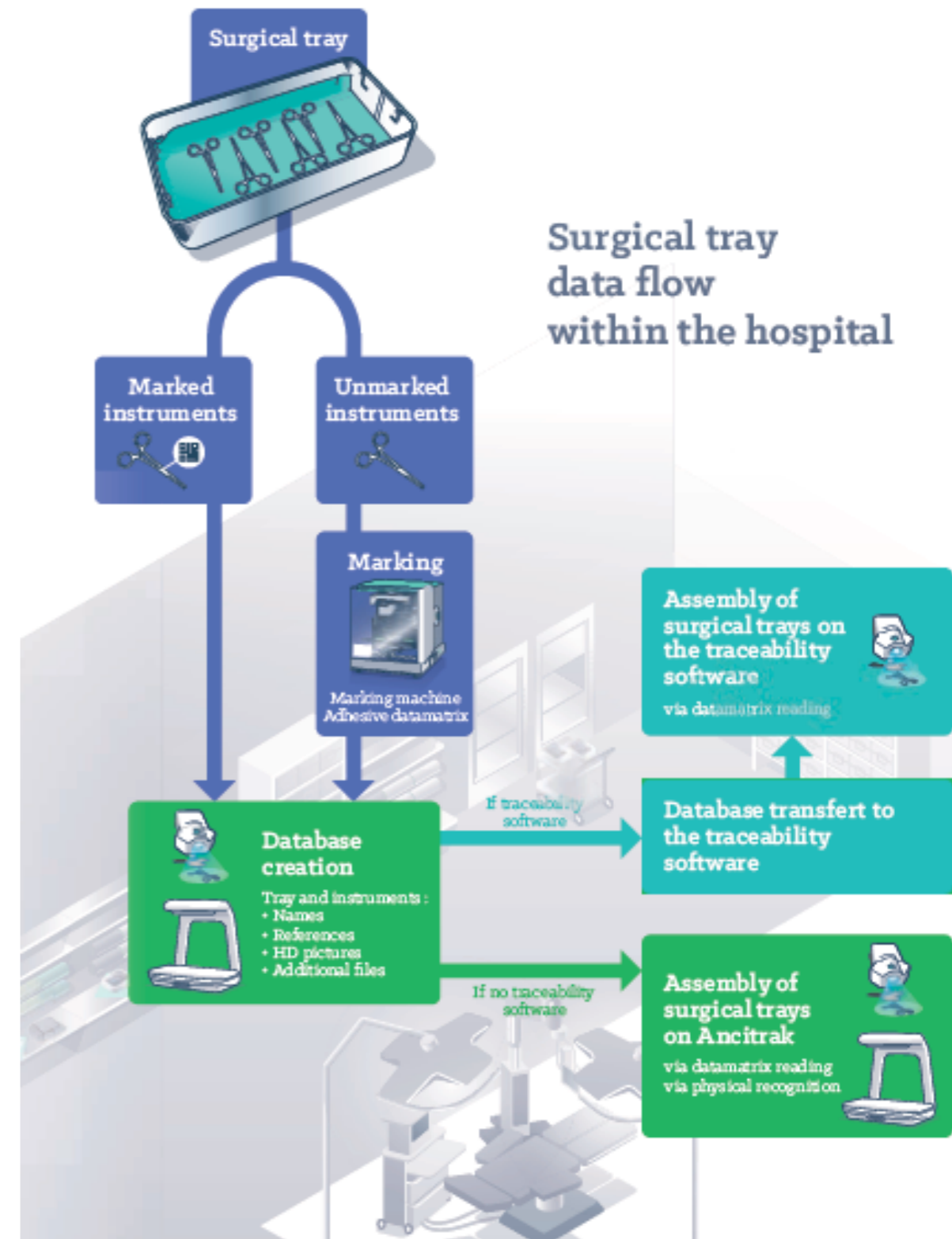
**OPTIMIZED PLATFORM
65x35cm, ALLOWING TO WELCOME ALL
TRAY AND INSTRUMENT SIZES**



AnciTrak²: SURGICAL TRAYS MANAGEMENT

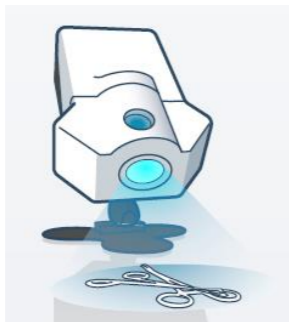
AnciTrak² is used for surgical tray management:

- This device allows the creation and transfer of the database at the instrument level, to implement UDI (Unique Device Identification)
- It is a standalone machine which allows hospitals to take the first step in the computerization of traceability and gain conformity in CSSDs that don't have a traceability software yet

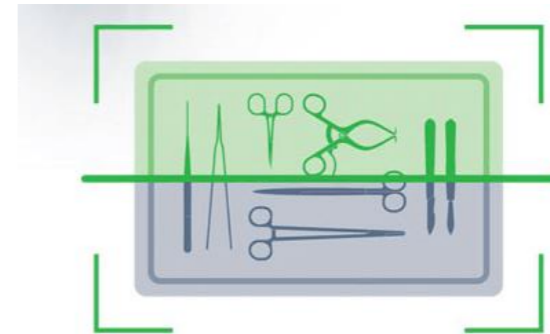


- Creating full, picturized and detailed Database.
- Helping operators during assembly process (HD pictures, physical recognition, localization of instrument into the set) – could be connected to a Data Matrix reader.
- Management of the instrumentation maintenance data
- Training system (Set assembly & Knowledge of the instrumentation) for CSSD staff

Helping operators during assembly process (HD pictures, physical recognition, location of instrument into the set)



Assembly via datamatrix reading (Add-on Feature)



Assembly via instruments physical recognition



HD pictures, allowing to easily compare physical instruments with the database



Indication of the instruments location within the trays for a facilitated and conform assembly

FEATURES

ASSEMBLY

AnciTrak² allows the management of surgical trays assembly at the instrument level by:

- Using a datamatrix reader
- Using the physical recognition
- Using the listing and HD pictures



DATA CREATION

Creation of a complete database of trays at the instrument level with names, references, datamatrix, HD pictures, comments... The database can be use with the machine as a standalone workstation OR be transferred to the tracability system.