

# ALYON

Surgical Lighting System



Shaped by **Inspiration**  
Powered by **Experience**

Introducing a light that is intelligent, beautifully different, and designed to fit seamlessly into your OR and its workflow.

Our long history of creating surgical lights is reflected in this new ALYON Surgical Lighting System.

ALYON-Pro

## Sleek Smart Adaptable

### Customise your lighting experience to adapt to each medical specialty

- 4 distinct spot sizes controlled from the handle, yoke control or wall control
- Fixed (4 500 K) or adjustable colour temperatures to accommodate clinician preferences (3 500 K | 4 000 K | 4 500 K | 5 000 K)
- 10 intensity settings to match lighting needs with the procedures

### 100+ years of experience

The excellence and ingenuity of STERIS surgical lighting is based on more than 100 years of experience and dedication. Over time, feedback from users has become a valuable resource to move forward our technology.

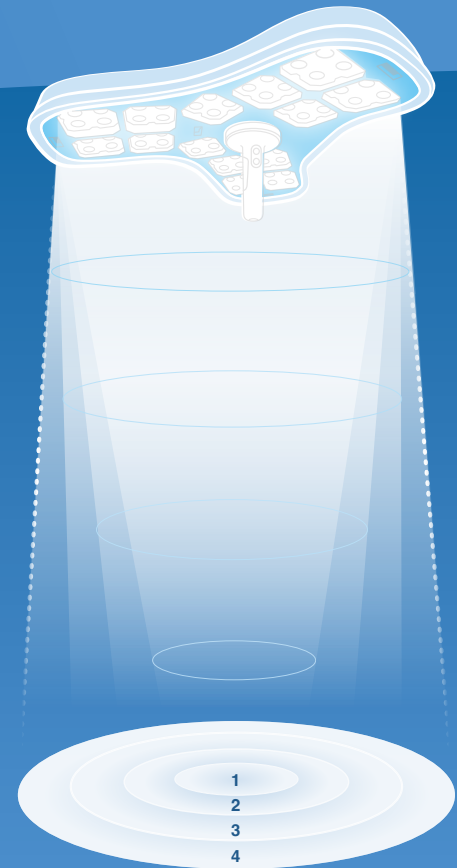
### Automatically maintains light intensity

Auto Intensity: Lighting automatically maintains constant light intensity, even during position adjustment.

### Adaptive Lighting: Automatically boosts light where needed

Adaptive Lighting sensors automatically detect obstructions and boost the LED output to compensate, resulting in more available illumination to support a comfortable experience for the surgical team.

### 4 Adaptive Lighting sensors



4 distinct spot sizes  
from 17 - 28 cm







## Control at Your Fingertips

ALYON offers ergonomically designed sterile light control that is easy to use and provides on/off control of the lighting system, intensity, and spot size.

Control the light using the intuitive yoke controller, wall controller, light handle, or through operating room integration systems.

From the Handle

From the Touchscreen Wall Controller

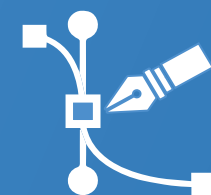
From the Touchscreen Yoke Controller

From OR Integration Systems



## Integrated Ambient and Task Light

Allows for illumination of the OR during minimally invasive procedures when the surgical lights are not in use.



## A sleek design for the OR of today and tomorrow

Look to ALYON for an ideal combination of the qualities you'll depend on for daily success in your hospital operating room or ambulatory surgery center.

## Compatible with laminar airflow systems

When using laminar air flow systems, air is able to travel around the fluid shape of the lighthead, reaching the patient without obstruction.

## Lightweight and robust aluminium for superb performance

The aluminium enclosure ensures durability over the lifetime of the system. Aluminium provides excellent heat dissipation without the need for forced ventilation.



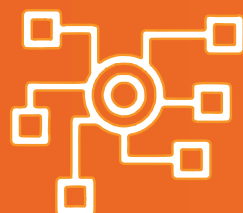
## 4K Wireless Camera for Clarity and Enhanced Contrast

The 4K wireless in-light camera can be attached to the handle of all ALYON lighthead for an unobstructed view of the surgical site. Controlled from the yoke or wall-mounted control panel or through the OR Integration Systems, the 4K camera provides superior visualisation for reference, broadcasting, and teaching.

## A sealed design that's easy to clean

Our goal is always to help you to create a safe and healthy world for you and your patients. The ALYON lighthead is designed to meet the challenges of today's operating room, supporting your initiatives in infection control with an easy-to-clean design. An ingress protection rating of IP54 ensures the light can withstand the rigorous cleaning and disinfection requirements.





# ADAPTABLE

## Customise your surgical lighting

for the procedures of today and tomorrow

### An adaptable solution to enhance OR productivity

Flexible suspension and accessories customisable to your requirements.

The ALYON suspension system allows you to configure lighting to fit your OR.

Accessories allow you to personalise the set-up to meet the needs of your clinical teams.

#### Choose your Suspension

##### Suspensions to fit any room configuration

The expanded range of motion for lights, monitors, and utilities makes it:

- Easy to position for specific case needs
- Easy to stow out of the way when not in use

The system's open architecture gives you the flexibility to use any major integration or monitor provider that you choose.



ALYON Surgical Light mobile version.



ALYON-Pro

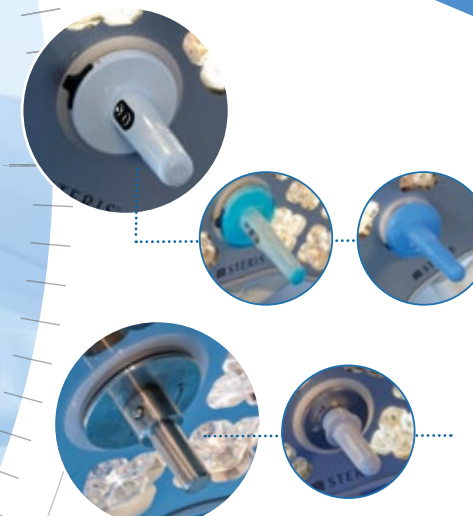
#### Choose the Colour Temperature: Fixed or Adjustable



4 500K



3 500 K | 4 000 K  
4 500 K | 5 000 K



#### Choose your Accessories



Wireless 4K Camera

#### Add Cameras and Monitors



Spring arm with single or dual monitor holder



Monitors available in HD or 4K, from 31 to 65 inch







## Technical Specifications

	ALYON-Pro (ALY1xx)
Maximum central illuminance	160 000 lux
Pattern size diameter in cm (d10)	17-28
Fixed colour temperature	4500 kelvin
Adjustable colour temperature	3 500 - 4 000 - 4 500 - 5 000 kelvin (optional)
Colour rendering index Ra (CRI)	98
Red rendering index (R9)	97
Caucasian skin colour rendering index (R13)	98
Depth of illumination (L1+L2) @ 60 %	75
Depth of illumination (L1+L2) @ 20 %	130
Estimated life cycle of LEDs in hours	60 000
Auto-Intensity feature	✓
Adaptive Lighting sensors	✓
Wireless 4K camera compatibility	✓
Lighthouse ambient light	✓
Lighthouse task light	✓
Ingress protection rating	Dust and fluid ingress protection rating of IP54

✓ = included

## 4K Wireless Camera Specifications

Camera signal	4K: 2160p
Resolution	8.51 million pixel (4K, 3840x2160)
Wireless transmission frequency	5 GHz
Optical zoom	20 X
Digital zoom	12X
Focus	Auto / manual
White balance	Auto / manual
Brightness	Auto / manual
SN ratio	50dB or more
Receiver video output	1x HDMI 1.4 Type-A

Possibility of pairing one wireless camera with up to 4 receivers

**ALYON**  
Surgical Lighting System

**STERIS**

5960 Heisley Road  
Mentor, OH 44060-1834 • USA  
440-354-2600 • 800-548-4873

For more information, contact your STERIS representative  
or visit [www.steris.com/healthcare/surgical](http://www.steris.com/healthcare/surgical)

© 2025 STERIS - M202EN - 2025-03 - Rev. B . ALYON™ - All rights reserved.  
The specifications are for information only, STERIS reserves the right to modify them without notice. Photos are not contractually binding. Photo credit: Kreaphoto. ALYON™ surgical lighting system is a class I medical device EC marked. To use this equipment safely, carefully read the instructions in the user manual and on the labelling.