

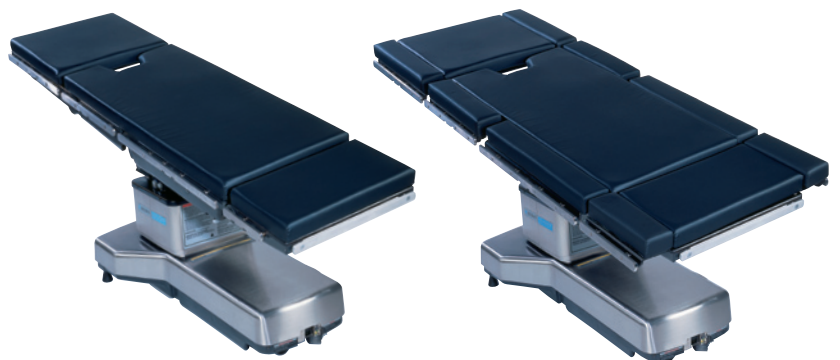
## Heaviest Patient Support. Uncompromising Value.

Amsco® 3080/3085 SP™  
Bariatric Table Extensions



### Bariatric Transformation for Your Current Amsco 3080/3085 SP Surgical Table

For general surgeons and their teams performing bariatric or other surgeries on obese or morbidly obese patients, the Amsco 3080/3085 SP Bariatric Table Extensions Accessory offers a new dimension of patient support, safety, and continued return on investment for existing tables. This simple and secure application transforms the entire surface of a normal 20 inch wide surgical table top to 28 inches, providing a wide, stable platform for patient support, and for the attachment of many accessories used on Amsco 3080/3085 SP Surgical Tables.



### Extraordinary Patient Weight and Patient Width Capacity

The bariatric extensions increase the original table width by a total of eight inches, allowing wider patient positioning. When applied to Amsco 3080/3085 SP Tables for patients postured in normal orientation, Amsco Bariatric Table Extensions are rated for use with patients weighing up to 1000 pounds (552 kg). Users must verify the patient weight capacity of the surgical table model to which they are applied.

STERIS®  


## Easy and Secure Application

The Amsco 3080/3085 SP Bariatric Table Extension is designed as a modular accessory to be easily installed by the OR staff. The complete system is comprised of eight bariatric extensions, two each for the head, back, seat, and leg sections. Each bariatric extension attaches securely to either side of the table with an integral clamp and has an attached side rail for accessory application.

## Uncompromised Patient Positioning

Bariatric extensions are unique to each table section and are not interchangeable with other table sections, ensuring safe articulation throughout the table's full range of patient posturing motions.

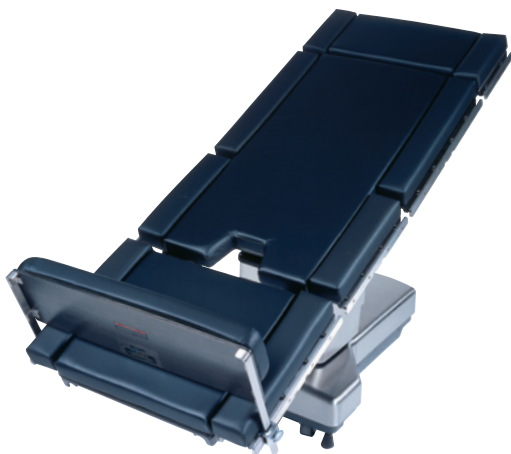
## Versatile, Safe, and Cost-effective

- **Portable:** The Amsco 3080/3085 SP Bariatric Table Extensions can be quickly moved from one OR to another, allowing you to transform any Amsco 3080/3085 SP table in your hospital to a bariatric table.
- **Unsurpassed Weight Capacity:** The Amsco 3080/3085 SP Bariatric Table Extensions are engineered with lightweight rugged carbon fiber composite to support patients as heavy as 1000 pounds (552 kg). Stainless steel side rails duplicate the strength of those on the surgical table.

- **Cost-effective:** By utilizing the Amsco 3080/3085 SP Bariatric Table Extensions to maximize the capability of your existing investment, you eliminate the need to purchase a specialty table for bariatric procedures.

## More Accessories for Bariatric Procedures

- **Bariatric Foot Extension with Siderail Locks:** STERIS's Bariatric Foot Extension with Siderail Locks easily applies to the width extensions, adding length for taller patients. It swings 90 degrees upward for foot support when in reverse Trendelenburg (shown). Rated for patients as heavy as 1000 lb. (552 kg).
- **Split Leg Positioner with Foot Rests and Clark Sockets:** STERIS's Split Leg Positioner Accessory with Foot Rests and Clark Sockets provides a safe system for positioning patients in an abducted leg posture, allowing maximum surgical site access. Excellent for bariatric, colo-rectal, and laparoscopic procedures.



Publication ID #M2568EN.2003-12, Rev. A  
GPSI Printed 12/2003, 15,000  
©2003 by STERIS Corporation  
All rights reserved. Printed in USA

### STERIS OFFICES WORLDWIDE

Canada	800 661 3937
France	33 1 55 176000
Germany	49 2233 6999 0
Italy	39 02 2130341
Japan	81 78 321 2271
Korea	82 2 517 1517
Latin America	305 442 8202
Singapore	65 68 41 7677
Spain	34 91 658 5920
United Kingdom	44 1256 840400

Technologies to Prevent Infection and Contamination™

# STERIS®



STERIS Corporation  
5960 Heisley Road  
Mentor, OH 44060-1834 ■ USA  
440-354-2600 ■ 800-548-4873  
[www.steris.com](http://www.steris.com)